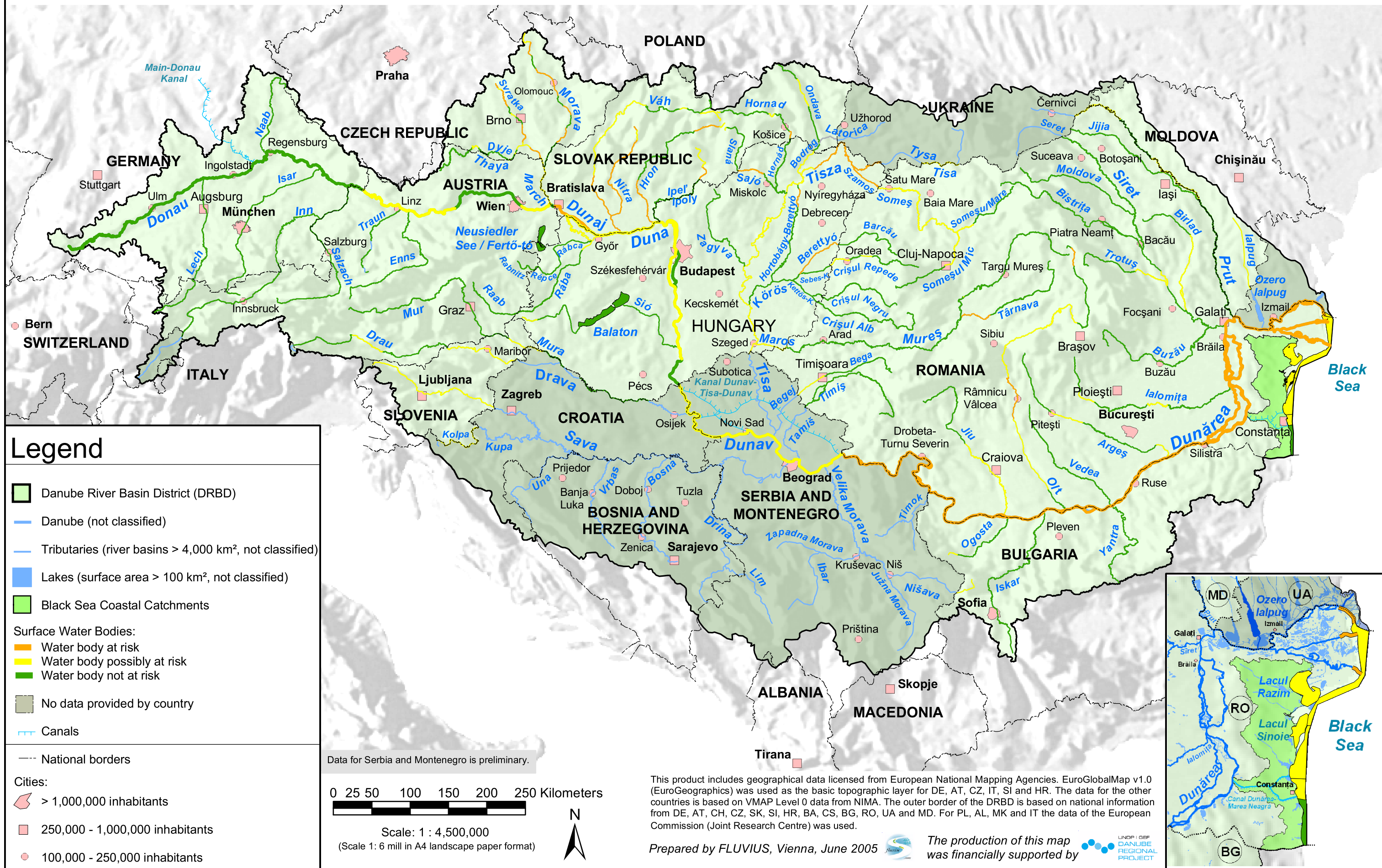


Danube River Basin District

Map 12: Risk of failure to reach the Environmental Objectives - Hazardous Substances

Product of:
ICPDR (International
Commission for the
Protection of the
Danube River), Vienna



Legend

- Danube River Basin District (DRBD)
- Danube (not classified)
- Tributaries (river basins > 4,000 km², not classified)
- Lakes (surface area > 100 km², not classified)
- Black Sea Coastal Catchments

Surface Water Bodies:

- Water body at risk
- Water body possibly at risk
- Water body not at risk
- No data provided by country
- Canals

--- National borders

Cities:

- > 1,000,000 inhabitants
- 250,000 - 1,000,000 inhabitants
- 100,000 - 250,000 inhabitants

Data for Serbia and Montenegro is preliminary.

0 25 50 100 150 200 250 Kilometers

Scale: 1 : 4,500,000
(Scale 1: 6 mill in A4 landscape paper format)

This product includes geographical data licensed from European National Mapping Agencies. EuroGlobalMap v1.0 (EuroGeographics) was used as the basic topographic layer for DE, AT, CZ, IT, SI and HR. The data for the other countries is based on VMAP Level 0 data from NIMA. The outer border of the DRBD is based on national information from DE, AT, CH, CZ, SK, SI, HR, BA, CS, BG, RO, UA and MD. For PL, AL, MK and IT the data of the European Commission (Joint Research Centre) was used.

Prepared by FLUVIUS, Vienna, June 2005

The production of this map was financially supported by

